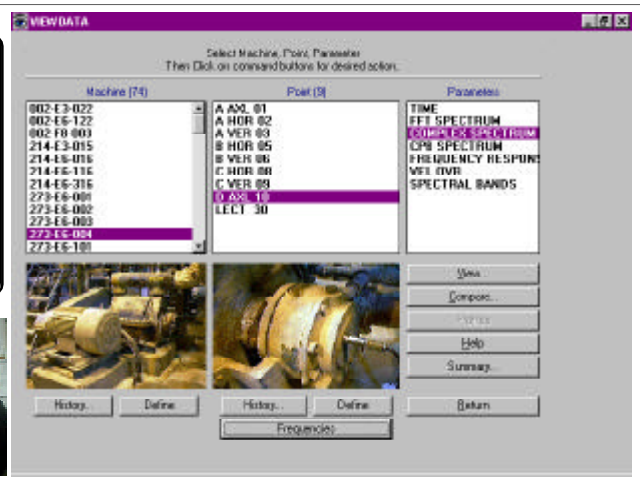
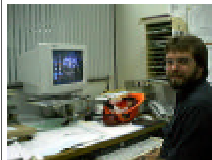


USES

- Powerful data base management and processing for vibration monitoring of rotating equipment
- Fault detection and diagnosis using enhanced visual tools and efficient measurement techniques
- Trend analysis and report generation on machinery condition

Collecting, analysing and trending vibration data has never been so easy than with VIBREXPERT lite. Every effort was made to simplify the operation while retaining the powerful capabilities of vibration monitoring.



FEATURES

Runs in the WINDOWS* 95/98/ME and NT/2000 environments, uses MICROSOFT ACCESS* data base format (network version available)

Accepts data from many data collectors (DIAGNOSTIC INSTRUMENTS PL-302, PL-31, DI-1100, DI-225 and STELL MOVILOG2)

Advanced visualisation features including interpolating cursors, flexible vibration units, conversion, Kurtosis and crest factor analysis, Octave Band Velocity spectrum synthesis and comparison, cepstrum analysis, 3D and matrix spectrum display, machine profiles and many more

Can display severity charts as well as vibration criteria in order to simplify interpretation of the data

Import and export to other formats or software programs including ASCII, SPREADSHEET, FINE-TUNE, and many others

ADVANTAGES

- Simple and flexible use. Well supported GUI environment

- Only a single program is needed to process data from many different instruments

- Speeds up and simplifies interpretation of the vibration data while improving the accuracy of the results

- This reduces the time to correctly understand the measurement results

- Possibility to exchange data with other applications

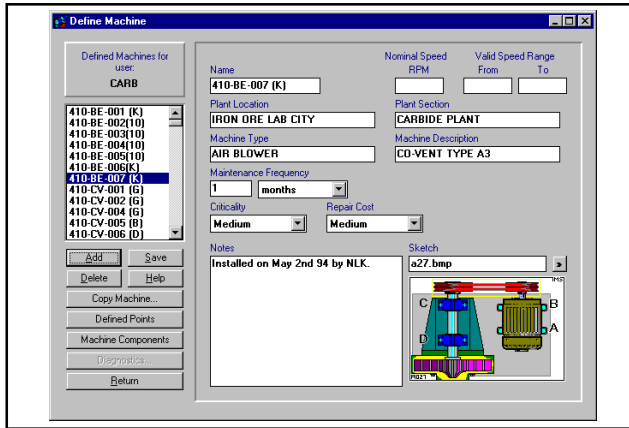
VIBREXPERT lite is a versatile WINDOWS* program written to handle vibration data measured on rotating machinery. It can perform spectrum comparison and trend analysis as well as provide superior visualisation of measurement results. Many data collectors can be used with VIBREXPERT lite. Special techniques have been implemented to facilitate bearing fault detection and diagnosis (Peak-RMS trending and envelope analysis). Another feature of the software is its powerful Octave Band Velocity mode, which simplifies the detection process and trending of frequency band data. Many powerful reports can be generated from the measured data.

Periodic vibration measurements carried out using data collectors, is one of the most powerful tool to detect rotating machinery faults such as unbalance or defective bearings, and this in turn will yield large savings in maintenance costs and better planning of maintenance operations. However the handling of this type of data can be very tedious when the volume of data is large. Moreover, the methods employed to process and display the data can influence the quality of the interpretation when trying to assess the machine condition. VIBREXPERT is a WINDOWS* software program written especially to improve the visualisation and speed up the processing of such type of data. Because of its unique user-interface VIBREXPERT will allow the inspector to save many precious working hours while the presentation of his analysis results will be greatly improved.

INTERNATIONAL MEASUREMENT SOLUTIONS

27 magnolia
Baie d'Urfe, Quebec
Canada H9X 3K7
Tel.: 1-514-457-3087 Fax: 1-514-457-4794
E-mail: ims@intlmeas.com
Internet WWW : <http://www.intlmeas.com/>

* WINDOWS and ACCESS are trademarks of MICROSOFT CORPORATION

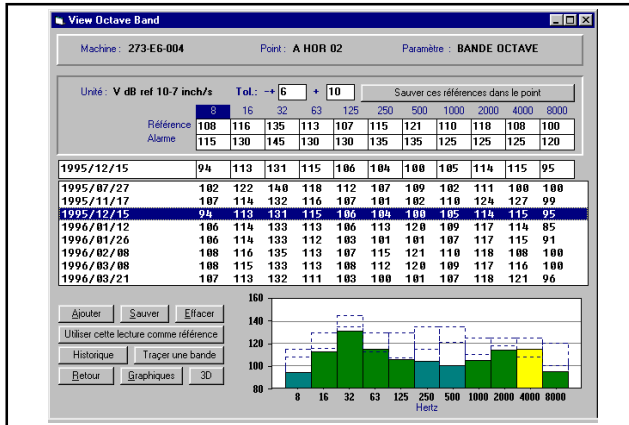


COMPREHENSIVE DATA BASE IN MS- ACCESS*

Using VIBREXPRESS lite, you can quickly set up a comprehensive data base including machine definitions, sketches, maintenance history notes, inspection notes, vibration data as well as technical information regarding related machinery components such as bearings and gears. Machines can be grouped for easy access and more flexibility during report generation. The simple hierarchy structure enables a separation into segments or sections which may correspond to machine banks, plant departments, or various plants/buildings. One of the key feature of VIBREXPRESS is its ease of use and effectiveness. Several functions are available to speed up the creation of machine and point definitions, and increase the reliability and flexibility of data base functions. VIBREXPRESS lite supports WINDOWS* 95, 98,

2000 and NT (network or individual workstation) and all known vibrations units. The software is also available in many languages (english, spanish and french). Many other languages are in preparation.

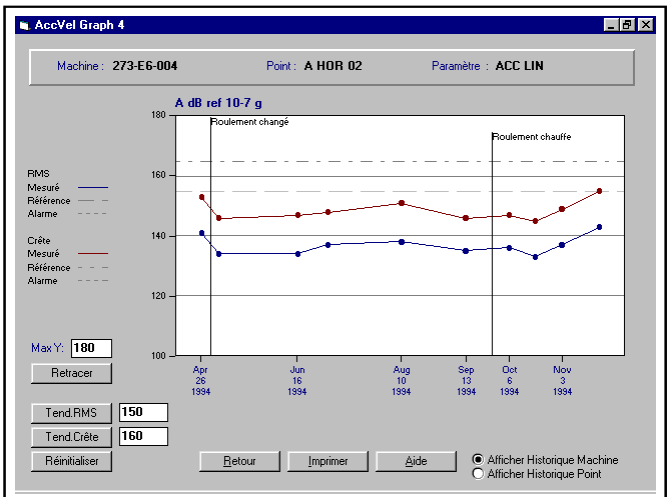
VERY EFFICIENT ALGORITHMS FOR FAULT DETECTION



One of the simplest method to compare and trend spectral band data and yet one of the most efficient ones is the use of the Octave Band Velocity spectrum. This method was adopted several decades ago by many Navies around the world and still remains today their preferred one. We have improved this method while retaining its simplicity and ease of use. This will results in much quicker set-up of the vibration data base and is especially suitable for use by non-specialist personel. Very reliable levels are obtained for data trending and the method is not too sensitive to operating conditions or speed of the machines.

TREND ANALYSIS AND REPORT GENERATION OF REPORT ON MACHINE CONDITION

Trending curves can be obtained from overall data (RMS, Peak of Kurtosis), or from Octave Bands. Inspection notes and maintenance operations can also be displayed on the trending curves. From the trend, it is possible to predict when a dangerous level will be reached, enabling better planning of maintenance operations. Minimum, alert and alarm levels can be defined and many types of reports on machinery condition can be generated, in order to be transmitted to other plant personel.



For more information, please contact:

or visit our World Wide Web site at <http://www.intlmeas.com/>